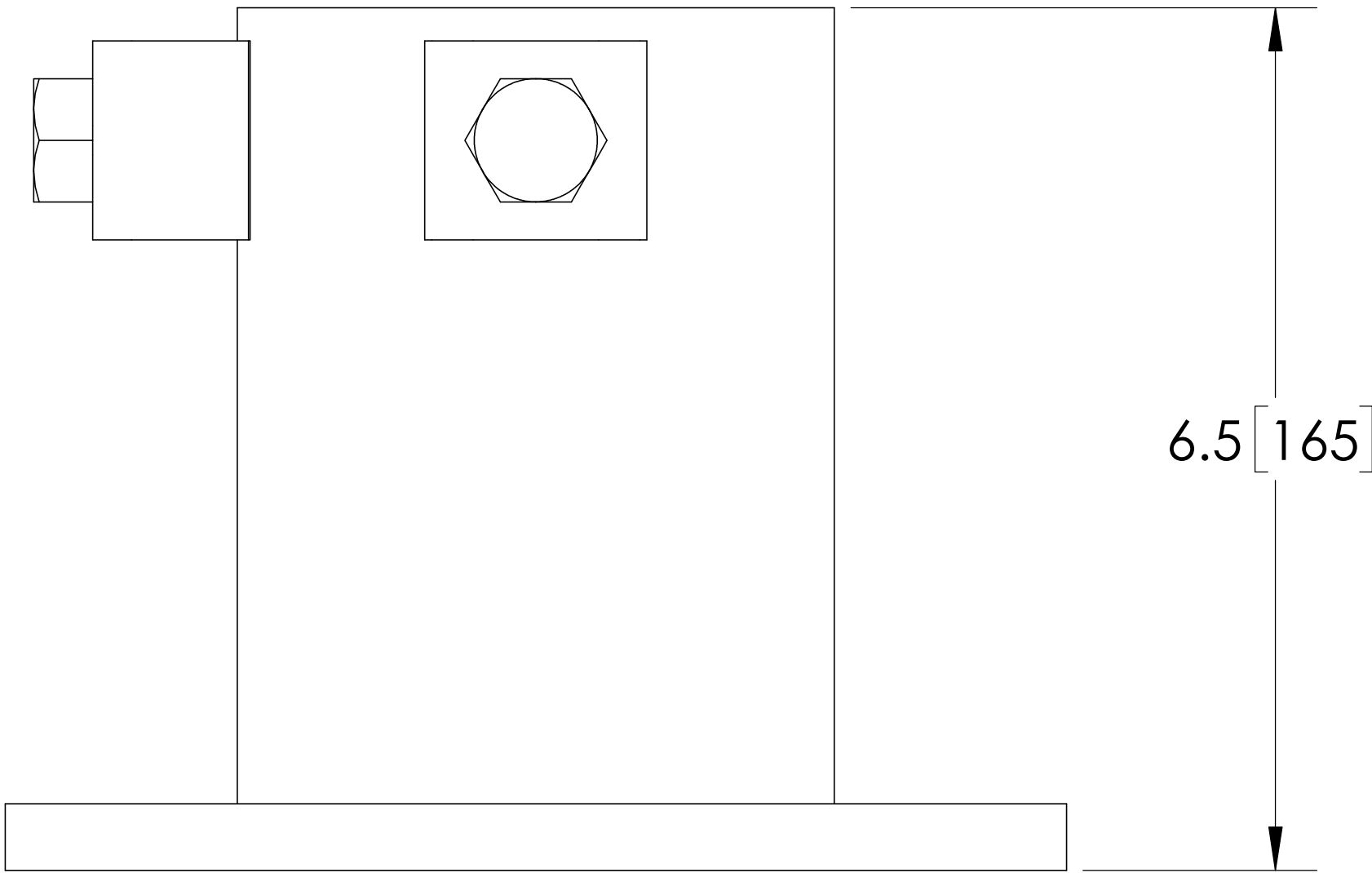
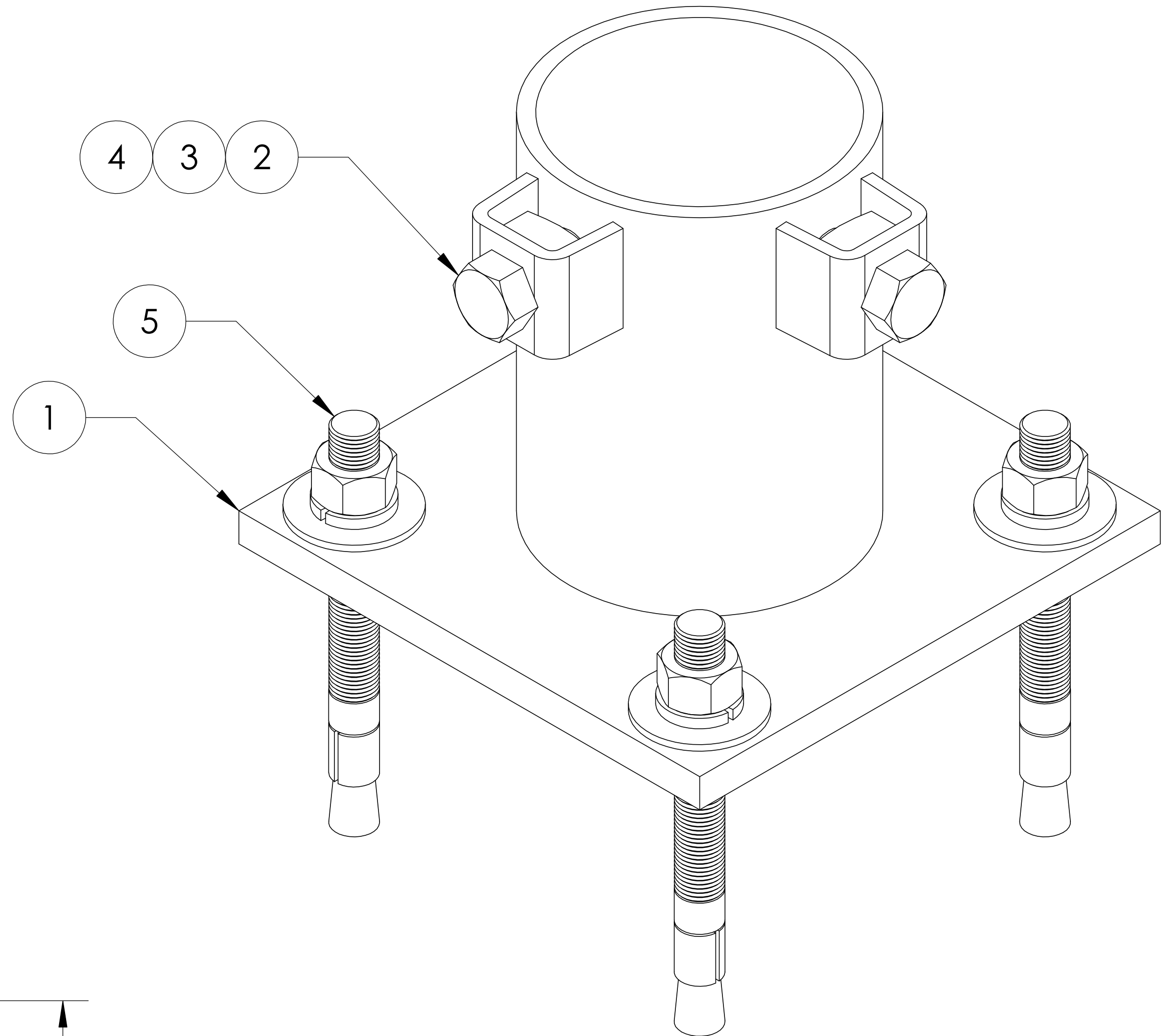
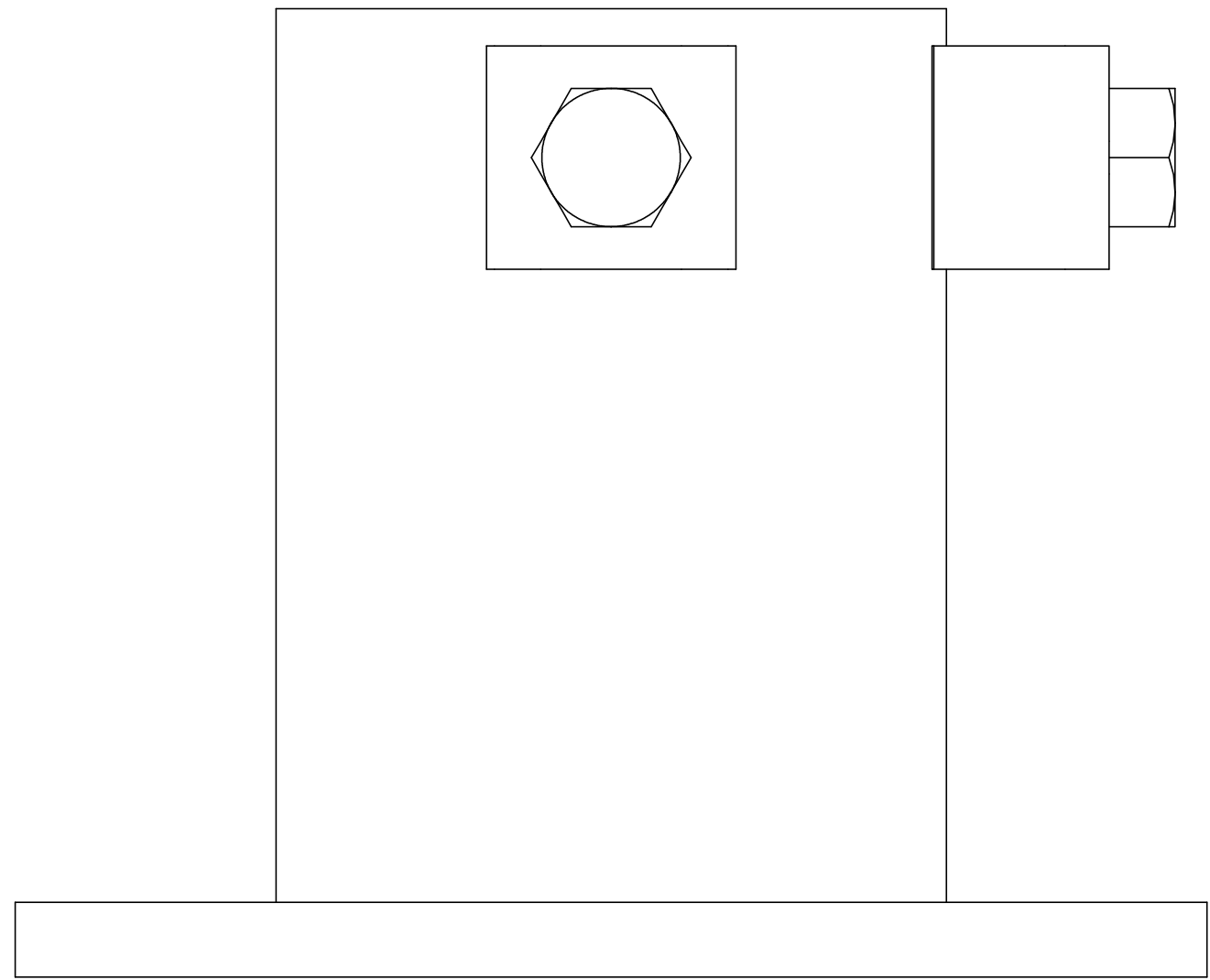
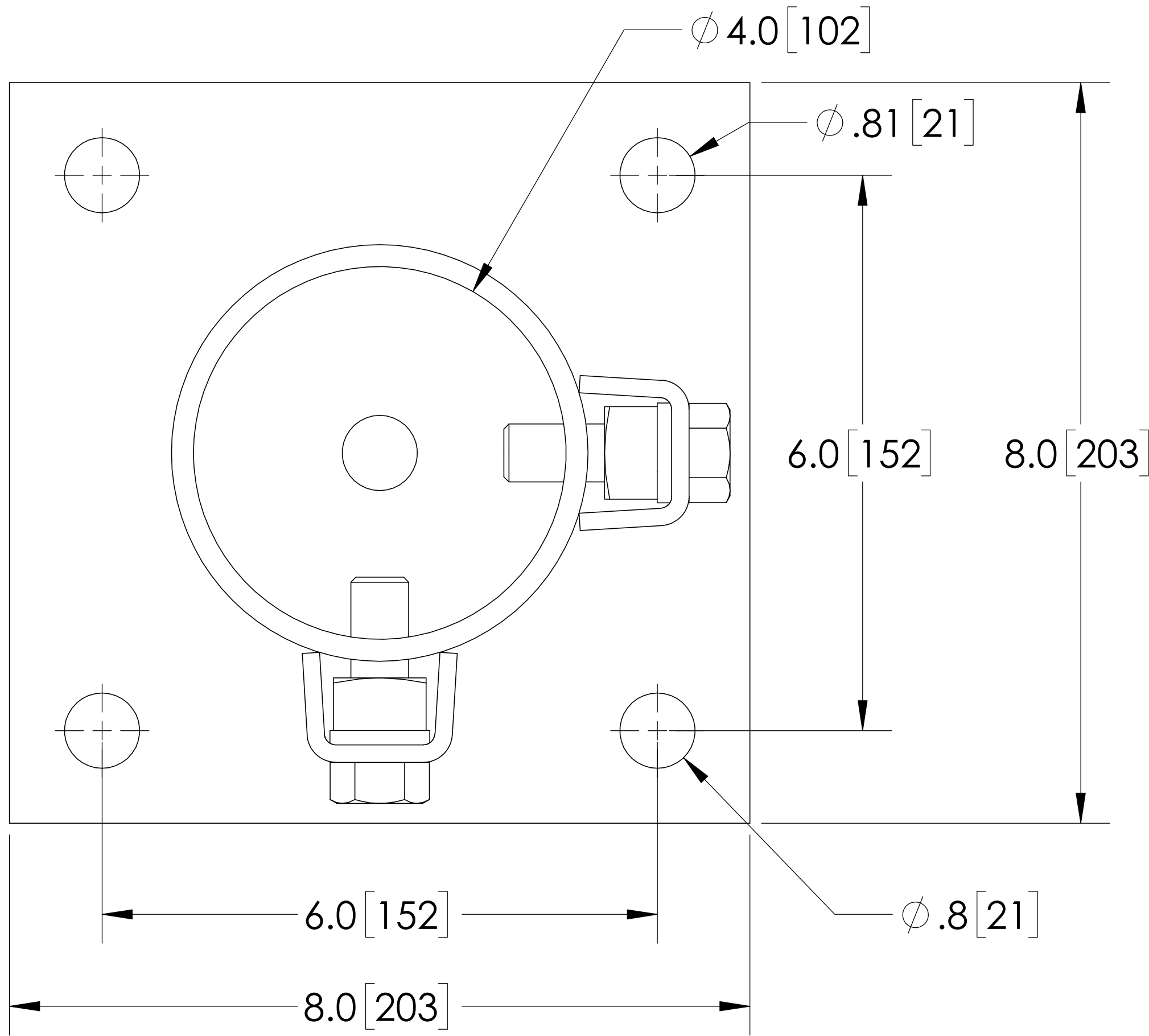



ITEM	PART NO.	DESCRIPTION	QTY	WEIGHT
1	WBBS.01	WELDED BASE SHOE	1	14.46 LBS
2	GB05205.01	5/8"-11 UNC X 2" GALV HEX BOLT	2	0.27 LBS
3	GWL05	5/8" GALV LOCK WASHER	2	0.03 LBS
4	SQN-06	5/8"-11 UNC GALV SQUARE NUT	2	0.12 LBS
5	MT280	5/8" X 6" WEDGE ANCHOR KIT	4	0.64 LBS

REVISIONS					
REV.	ECN	ZONE	DESCRIPTION	BY	DATE
A			INITIAL RELEASE	ACG	10/18/13
B			REDESIGNED FOR USE WITH U-BOLTS (SEE WBBS2)	ACG	10/20/21
C			REVISED DESIGN BACK TO REV A, ADDED ANCHOR BOLTS	ACG	10/16/23



NOTES:
1. ALL METRIC DIMENSIONS ARE IN BRACKETS.

These drawings and specifications are proprietary property and may be used only for the specific purpose authorized in writing.		
ALL DIMENSIONS ARE IN INCHES U.O.S. TOLERANCES UNLESS OTHERWISE SPECIFIED:		
.X = \pm .06	ANGLES	$\pm 2^\circ$
.XX = \pm .03	FRACTIONS	$\pm 1/32$
.XXX = \pm .010		
REMOVE BURRS AND BREAK EDGES .005		
DO NOT SCALE THIS PRINT		

DRAWN BY: ACG	SHEET: 1 of 1	PART NUMBER: FM-WBBS
CHECKED BY: MKV	SCALE: NTS	DESCRIPTION: SLIP ON BASE SHOE KIT FOR 3-1/2" O.D. PIPE
DATE: 10/18/13	MATERIAL: A36, A53	DRAWING TYPE: ASSEMBLY DRAWING
REVISION: C	FINISH: GALV A123	
	WEIGHT: 17.86 LBS	